

press release

New Managing Director at membrane specialist seele cover

Obing, 28 March 2019: On 1 April, a new managing director takes over at the specialist in membrane architecture seele cover. Benoit Fauchon will be in charge of the company with immediate effect. He replaces Konrad Maier, who has been managing director of seele cover since 2010 and is now retiring. As part of the seele group of companies, the membrane specialist has access to the entire network and know-how of the group.

Benoit Fauchon, who studied civil engineering, has been working in the field of membrane architecture since 1998. Most recently, he was employed as an authorised signatory at Taiyo Europe. His more than 20 years of experience in the distribution of medium-sized companies and his focus on the ETFE business are ideally suited to the strategic orientation of seele cover.

"I am very much looking forward to this new task and the associated challenges. I am convinced that we will be able to further expand the success of seele cover in the field of membrane architecture and in particular ETFE", says Benoit Fauchon about his new position.

Comprehensive competence in the field of membrane construction and ETFE

Demanding membrane architecture requires many competencies. The range of services offered by seele cover includes the planning, manufacture, delivery, installation and maintenance of membrane constructions made of ETFE films and fabrics. The degree of innovation required in membrane construction is provided by the own research and development department with test centre, halls and laboratories. In Obing, an outdoor area is also available for long-term tests on 1:1 mock-ups under weather conditions.

In the recent past, the membrane construction specialist has realised the large ETFE roofs of the two cruise ships AIDAperla and AIDAprima. Internationally, seele cover has also implemented renowned projects in sports stadiums, airports, swimming pools, shopping centres and infrastructure areas: for example, the approx. 10,000 sqm foil roof with air-supported ETFE cushions for the Canary Wharf Crossrail Station in London's Docklands or the atrium roof of the Siemens headquarters in Munich.

press release

seele group

The seele group of companies, with headquarters in Gersthofen near Munich, is one of the world's top addresses for the design and construction of façades and complex building envelopes made from glass, steel, aluminium, membranes and other high-tech materials. The technology leader in façade construction was founded in 1984 by master glazier Gerhard Seele and steelwork engineer Siegfried Gossner.

Based on a profound understanding of design and materials, seele provides everything necessary for ambitious one-off designs true to the original ideas of engineers and architects. The seele group offers its building sector and industrial customers a complete package of services, ranging from R&D, individual advice and joint conceptual design right up to the planning, detailed design and construction of their projects. seele's own production plants for technologically challenging designs and the group's own erection crews on site provide a guarantee of the very highest quality "made by seele".

About 1,000 employees work at the seele group's locations around the world, together generating an annual turnover of about €250 million.

seele cover GmbH

Based in Obing, Germany, seele cover is recognised as an expert when it comes to innovative, sustainable membrane architecture as well as lightweight plate and shell structures for new roof and façade solutions. Besides carrying out R&D, structural analysis and design, this is also the site of the membrane fabrication plant. Moreover, this location can provide the entire range of services for membrane architecture – from consultancy to logistics and to erection.

Press contact

Raphaela Schiessl

Marketing Manager

Phone: +49 821 2494 – 824

e-Mail: raphaela.schiessl@seele.com

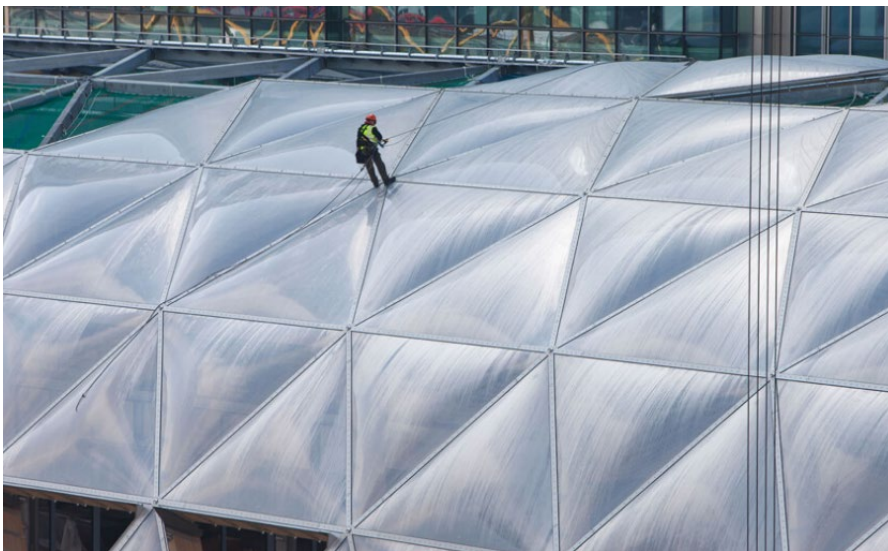
www.seele.com

press release

Visual material



Benoit Fauchon new Managing Director at seele cover GmbH. ©seele/Peter Neusser



Assembly and maintenance of ETFE cushions through seele cover. ©Robby Whitfield

seele

press release



Canary Wharf Crossrail Station ©Nigel Young